

TCA Mission: To develop an appreciation of and to preserve an important segment of history – Tinplate Toy Trains –through research, education, community outreach, fellowship, establishment of collecting standards, and to promote the growth and enjoyment of collecting and operating toy, model and scale trains.



# Desert Division

## DISPATCH

ARIZONA • NEW MEXICO • WEST TEXAS



Volume 39, No. 9

Click on the link to our e-Bay offerings.

November, 2009

## OCTOBER MEET vs. RAILFAIR

The October 10 Meet of the Desert Division was held at the Bethany Lutheran Church. Our 50 plus members filled the hall to capacity, with tables galore and free donuts and sodas for all in attendance. Steve and Bonnie Rudy joined us from Prescott Valley, Boyd Reasor brought his mother today, and Bob and Judy Miazga have returned from Minnesota for the warmer climes of the Desert during the winter months.

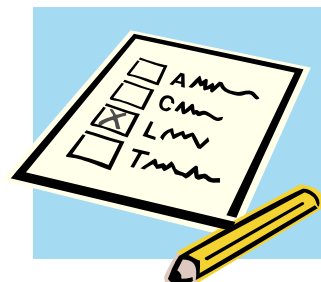
President Elgar tried out the new portable sound system, with battery back-up, which had been procured by Marty Wik for our use in any location. Treasurer Bob Herman announced that we have \$12,143.60 in savings and \$1,940.90 in checking. This does not include the recently deposited money from the 2009 TCA National Convention funds. The \$10,000 loan has been returned, as has the nearly \$10,000 income from the TCA Convention Banquet Auction. Turkey Meet fliers are out, and several members gave their reservations to Bob Herman at the Meet. The October meet was in competition with Railfair, where several of our regular members were in attendance.

The Rio Grande Chapter has requested \$150 to use for FasTrack and switches for their Middle School layout, which graced the 2009 Convention this past June. The Division has also donated a Polar Express set to Ronald McDonald's "McNight to Remember" silent auction. Both of these items came from the "Trains for Kids" fund.

The Holiday Party will be Sunday, December 6, at the Mesa Marriott. A flier about it is included in this issue of the Dispatch. Adult buffet meals are \$27, with children's meals remaining at \$15 and children under 2 admitted for free. The Spring Picnic will be at the McCormick-Stillman Railroad Park in Scottsdale on March 20, 2010, one week after our regular March Meet.

The TCA Bylaws passed. Carol McGinnis won the Vice-Presidential race, and Paul Edgar won the President-Elect spot. Katie Elgar did not win this time, but she said that she might run again. On the local level, Steve Bienstock announced the slate of officers for 2010-2011 as follows:

President:	Jonathan Peiffer
Vice-President:	Bob Johnston
Treasurer:	Bob Herman
Secretary:	Fred Hunter
Directors:	Tony Saulina
	Ralph Treichel
	Art Triant
	Marty Wik



This year we elect only two directors, as Katie Elgar remains on the local Board as a Past-President Director and the Rio Grande Chapter President is automatically a Director. Brief bios of the candidates are included in this issue of the Dispatch. The ballot was sent out via first class mail. Be sure to open it, vote, and return it as per the printed instructions.

## COMING UP...

**NOVEMBER 28-29 – TURKEY MEET – Mesa, AZ – 9 AM**

**DECEMBER 6 – HOLIDAY PARTY – Mesa Marriott – NOON**

**JANUARY 9, 2010 – Regular Division Meet – Phoenix, AZ – 9 AM**

**JANUARY 16 – Rio Grande Chapter Meet – Albuquerque, NM – 10 AM**

There was no Educational Segment this month. Art Triant and Jonathan Peiffer suggested “forums” for future consideration on such topics as How to Build a Layout, Module Ideas, Simple and Easy Repairs, etc.

Raffle prizes were awarded as follows:

Chris Allen	Hudson Raffle Ticket
Bonnie Rudy	Lionel NYC Gondola Car
Gordon Wilson	TCA Cooler Pack
John Wiley	Book - <u>Collecting Toy Trains</u>
Angelo Lautazi	Train Videos
Chet Henry	TCA Toy Train Museum truck
Jim Vokac	Train Magazine/Billboard Set/Figures
John Wiley	Train Magazine/Billboard Set/Figures

The \$100 Hudson Raffle prize this month went to Katie Elgar.

The meeting adjourned to Randy’s for lunch, followed by Railfair.



Charlotte Rench peruses the items for sale in the Church Hall.



Bob Dennison has a back table loaded with items for sale.



Katie Elgar collects the “c” note From the Hudson Raffle.

**\*\*\* DONATIONS \*\*\* DONATIONS \*\*\* DONATIONS \*\*\***

by Gordon Wilson, TCA 76-1023

At the recent York Meet, Christie solicited many Door and Raffle Prizes from some of the biggest and most recognizable names in our hobby. Since the Desert Division is a not-for-profit 501(c)3 organization, each of these icons of our hobby has already received a thank you letter and a tax exemption notice from our Division.

So, what does this have to do with you? This article is not about Christie Wilson soliciting prizes for the Division, it is about you and a request for more donations from our own members, locally. Wouldn't you like to see your name on the same “Donor List” as a Lionel Top 10 Dealer? Couldn't you too use a tax deduction letter for next April when you file your 2009 income tax return? The fact of the matter is, You Can.

If you have an item that is new and unused AND it is something that could be a useful item for a train collector/operator, a spouse, or a child, then it is something we would welcome as a donation. It should have a retail value of perhaps at least \$15-20 and up. It doesn't necessarily need to be a train item: a child's toy; a household item; a sports collectible – perhaps from the D'Backs, Suns, Coyotes, Mercury, or Cardinals; tickets to a concert or athletic event. We're sure you get the point.

Should you have such items and would like to make a donation to the Desert Division for our Door/Raffle prizes, contact Chris Allen (480-820-9559) or Gordon/Christie Wilson (480-837-5344) to arrange for pick-up.

The Dispatch is published monthly except July and December by the Train Collectors Association, Desert Division, 16231 E. Ocotillo Drive, Fountain Hills, AZ 85268. This issue is Volume 39, No. 9 (November, 2009).

## PRESIDENT'S MESSAGE

Greetings!

Our meeting site is still up in the air at this point but we are confident we will have a great location starting in January. The October meeting was held at Bethany Lutheran Church. This site may be too small for our meeting as 15 – 20 regularly attending members were involved in Railfair and not in attendance. The Board is continuing to look for a suitable site. Thank you to all of you who have helped to locate a possible facility for our use.

The Desert Division has purchased a small sound system to be used at each meeting. This will save the Division from having to pay rental at the new site and can be used at outside events, such as the picnic, as well. This system will pay for itself after just 4 meetings. Thank you to Marty Wik for checking out various systems for us.

The 55<sup>th</sup> TCA Convention report was presented for study and comments before Chris Allen's presentation at the Convention Guidelines Meeting at York. The Convention was successful. As a small way of saying "Thank You" to the many Division members who worked so hard to make the Convention a success, the coffee, soda, water and donuts were free at the October meeting.

Tri-folds, with registration, for the Turkey Meet have been mailed out and are on the website. Be sure to send in your pre-registration form and save \$1.00. Entrance is \$6.00 at the door, and \$5.00 if you are pre-registered. Remember this swap meet is 2-days long and in Mesa this year. We will have operating layouts as well. The entrance fee is good for both days with a hand stamp.

December is rolling around, bringing the Holiday Party on December 6. A registration form for this event is included in the bulletin and on the website. This event will be at the Marriott Hotel in Mesa. Santa will be leaving gifts for children under 12.

The Desert Division is donating a Polar Express Set to the Ronald McDonald House for their fundraising event. This is coming from the Trains for Kids account. Out of this account we also sent the Rio Grande Chapter \$150.00 to buy switches for their outreach program for special needs kids and the train layout the kids themselves designed. You may have seen a part of this at the Convention this summer.

Don't forget to read the bios of the candidates running for office for your Desert Division and **vote and return your ballot**. Be sure to read the instructions on the ballot to make your ballot valid.

Now that the National By-laws have passed the Desert Division By-laws need to be revised. If you are interested in working on this project, please let me know.

Congratulations to Peter Atonna for having his layout picture chosen for the month of November in the 2010 TCA Calendar. Also, Congratulations to John Wiley for having his layout picture achieve honorable mention. They make great gifts. If you haven't purchased yours yet, they are available at the TCA website for \$11.95 from the TCA museum store at: [https://nttmuseum.org/store/advanced\\_search\\_result.php?keywords=calendar&x=33&y=15](https://nttmuseum.org/store/advanced_search_result.php?keywords=calendar&x=33&y=15)

It is that time of year to be planning your Holiday Train layouts. Be sure to take some pictures that can be put into the newsletter or up on the Desert Division website.

Happy trains!



## RIO GRANDE CHAPTER NEWS

by Gregory Palmer TCA #94-39039

At the time of writing this article, the Chapter is in the final stages of getting ready for the 2009 Pumpkin Meet. We have over 50 tables sold, fliers in all the Albuquerque Hobby Shops, major Antique Malls, and local restaurants. We have a running ad on Craig's List, will have our ad in the Newspaper, and have been in contact with the 3 major TV Stations. Several local Model Railroad clubs are running our flier on their web sites. So things are going well. I have also just returned from the Eastern Division York Meet. The weather was bad, but the toy trains, food, and friends were as good as always. At our January 16th Regular Rio Grande Chapter Meet we will have our Election of Officers. The following is the slate of 2010-2012 Officers and Directors:

President: Gregory Palmer  
Vice President: George Swajian  
Secretary: Scott Eckstein  
Treasurer: William Harris  
Directors at Large:  
Carl Cataline  
Arthur Lites  
Jon Spargo

If any other Chapter member wants to run for any of these offices, please come to the Chapter Meet on January 16th, at the Sombra Del Monte Church at 2528 Utah N.E., in Albuquerque, NM. Also please bring items to the education segment for show and tell. We also need to have a place to go for the after meet activity. Please contact me if you can help. Even if you do not have a layout, everyone's collection is interesting to view. We will also be looking at what to donate to the New Mexico Ronald McDonald House, and the Trains for Kids Project. Come to the Meet on January 16th, 2010.

## **VOTE**

In this year's Desert Division election, all positions are open. A ballot has been prepared and mailed out to all members in good standing as of October 15. Hopefully you have already received yours and considered who would be the best candidate for the Division. The information below includes information sent in by the various candidates. Please vote for the candidates of your choice, and return the ballot as per the instructions printed on it.

**PRESIDENT** - Jonathan Peiffer (01-53047) As Desert Division Vice-President, I ask for support to serve as your President. Desert Division continues to be the most dynamic division within the TCA. I embrace the mission of the TCA and its endeavors to grow and serve the hobby for all generations. I support the operation of trains for the public, a new vision for the Kids Club to attract younger members, and collaboration with other clubs, while never losing sight of the traditions of the division in our members' collections, the Turkey Meet, auctions and social gatherings. I see the role of Desert Division President as a leader who listens carefully to others, works closely with the Board of Directors and the membership, and represents the Desert Division's unique perspective to TCA National. I look forward to serving all within the Desert Division.

**VICE-PRESIDENT** - Bob Johnston (71-3490) I was one of the charter members of the Desert Division in 1971, serving as Secretary/Treasurer for the first two years. After a period of inactivity to take care of career and family, I became re-interested in the Desert Division after visiting our first National Convention in 1997, culminating in being named auction chair for 2009. I am a retired Industrial Educator and have had 35 years experience with the Alhambra Credit Union's Board of Directors. I am also a 53-year practicing musician and have a percussion repair and rental business serving schools and the music community. My wife, Sue, and I live in Phoenix and have two children and three grandchildren.

**TREASURER** - Bob Herman (94-40200): I have been the Desert Division's Treasurer for several years. As Treasurer, I am responsible for preparing the monthly treasurer's report, keeping an income/expense ledger to record all fund transactions and maintaining the checking and savings bank accounts of the Desert Division. I am also responsible for the monthly raffle which involves selling tickets and maintaining the prizes. I am a retired engineer. My hobby interest is standard gauge and 0 gauge trains.

**SECRETARY** – Fred Hunter (91-33521) – No information submitted.

**DIRECTOR** - Anthony Saulina (08-62150): I am running for the position of Director for the TCA Desert Division. I have been a member for about a year and a half. I collect and run 0 gauge trains from all manufacturers. Mostly, I run trains. Anything on my shelves can come down and run on my layout. Living in a townhouse, my layout is not that big; it is of the traditional style, but we have fun with it. I decided to run for a position after my experience at the convention. I chaired the trading pits and had so much fun and got so much help from the members that I decided I wanted to be more involved. We have a strong club, and to keep it that way, we must look for new members and everyone must stay involved.

**DIRECTOR** – Ralph Treichel (00-52232): I have been interested in trains since 1940 when I received my first train set as a Christmas gift from my parents. I still own this Lionel #238 train. I purchased a train set, a Lionel #675, in 1948. I also still have that train! As a Boy Scout leader, I worked with the scouts on an HO layout for a Scout-O-Rama. I also had an HO layout with my son in our basement before moving to Arizona. I am currently in the process of building a layout in my home. I collect Lionel, K-Line, and the ore cars from the Tucson Train Museum. When I moved to Phoenix, I became a member of TTOS and was Vice-President, board member, and co-chairman of the joint Holiday Party. In 2000 I joined TCA. I have helped with the Turkey Meet, Holiday Party, and was Chairman for getting volunteers for the 2009 TCA Convention.

**DIRECTOR** – Art Triant (97-45414) – Recruitment and participation are two key issues that need to be addressed by the club and, to that end, I would try to encourage everyone to bring more friends and railroad enthusiasts to the meets, at least for a visit. I also think that more attention should be paid to electing newer and younger members to offices in the club. They would seem to have more new ideas and energy and would tend to get away from old thinking or thinking that is a bit tired. Also, I would like to make everyone more aware of the National TCA and our Bylaws, so that we might have more input in Strasburg. So far, this club has been doing great, and now it is time to be even greater. We are a small club with a lot more going for it than others. We need to make the rest of the country stand up and take notice.

**DIRECTOR** - Martin Wik (97-44470): I have been a train collector from the age of seven. At the age of twelve, I started my first business. In high school, I received the Bank of America vocational arts award. After high school, I served in the U.S. Armed Forces for three years and then attended college for two years. In 1971, I married Paula Fay. Together, we have two children. We have lived in over 17 homes that I built or remodeled and have owned and operated four businesses. For the past three years, I have served the National TCA as the 2009 Convention Car chair. I became a Desert Division member in 1997. My objective as a Director of the Desert Division TCA would be fellowship, integrity and financial stewardship.



## MODULE CONNECTION: RAIL FAIR 2009

by Jonathan Peiffer TCA #01-530437

A hearty thanks to everyone who helped out with the modules during Rail Fair. The number of Desert Division volunteers that helped out this year is nothing short of miraculous! Members included Terry Bunish, Dallas Dixon, Jack Eaton, Katie Elgar, David Hoverstock, Bob Johnston, Janet Mattern, Russ Mosser, Jonathan Peiffer, Tony Saulina, Ralph Treichel and last but certainly not least Dwane and Barbara Turner. This does not include additional help from GCMR and Paradise and Pacific members. Wow! If I've missed anyone, I apologize! This year over 10,000 people visited the park and parking was at a premium. Turkey Meet fliers, coupons and TCA literature was handed out.



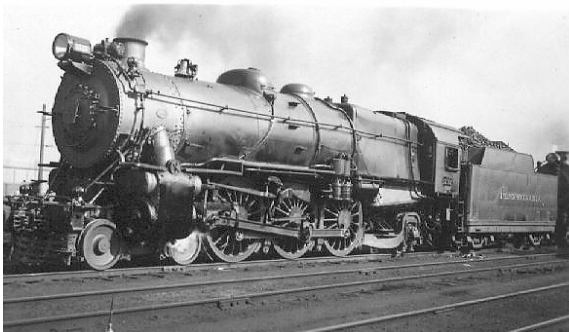
As usual there were a lot of kids in the park. The stair built by Bryan Rench for the convention really helped get the kids close and we allowed them closer than any other club. This proved to be a challenge on Saturday as a few cars were derailed while operating, but moving the stairs back about 12" and closer supervision helped address that issue for Sunday. The trains that ran spanned over 80 years of history with Ralph Treichel's 1920's Lionel electric to MTH SD70's from 2009. Thanks to Dave Hoverstock, who came up from Tucson for the weekend, there was even DCS working on one track.



Next up? We plan on running the same setup at the Turkey Meet. Setup will be Wednesday, November 25<sup>th</sup> and operations will take place on both Saturday and Sunday from 9:00 am to 3:00 pm. Tear down will be promptly at 3:00, at the end of the meet. Once again, we request help for setup, teardown and operations of trains. As the saying goes, "Bring a train!"

## PROTOTYPE PRIMER, THE PRR K4

by Jonathan Peiffer TCA #01-530437



As a start to what hopefully will be a regularly appearing column, we will take a look at toy trains we enjoy and trace them back to their prototype roots. This month we will discuss the prototype that the Lionel 2025 and 2035 are based upon, the Pennsylvania K4, 4-6-2 Pacific. Built in the Altoona, PA shops of the PRR, 425 locomotives of this type were built between 1914 and 1928. The K4 served the PRR well, lasting until 1957 in regular service and long after later built PRR locomotives. The two most obvious spotting features of this locomotive included the typical Keystone number plate on the front of locomotive and more importantly the boxy "Belpaire" firebox that was used on nearly all Pennsy steam locomotives. The Lionel 2025 was the first mass produced 3 rail 0 gauge locomotive to capture the feel of this locomotive but was designed with 027 layouts in mind being a 2-6-2 wheel arrangement. The later 2035 featured a 2-6-4 wheel arrangement. This particular steam locomotive represents one of the most modeled locomotives of all time, being available in nearly every scale dating from the 30's in 2 rail 0 all the way to the present time.



## **RAIN, RAIN, GO AWAY!**

By Gordon L. Wilson, TCA #76-10233

I've been attending York Meets continually since I joined the TCA in May of 1976. This past October was my 66<sup>th</sup> such event and 67<sup>th</sup> if I count the TCA National Convention held there during Desert Division member, the late Alvin Levin's second term as TCA President. I missed the Fall '94 York Meet, as it was held the same weekend as a Desert Division Meet and I was the Desert Division President – I felt it more important to be loyal to those who'd elected me at home than attend a Train Meet on the East Coast.

What I'm getting at regarding this meet is how utterly different the weather was – for the duration. Yes, it has rained before – many times, as a matter of fact, but usually in the spring, and never with the intensity and never for 140 straight hours. It was one gigantic “nor’easter” from start to finish, beginning on Monday and Tuesday, days reserved for the so-called Bandit or Hotel/Firehouse Meets. The rain definitely impacted attendance, both buyers and sellers, as there were empty tables galore. However, in phone conversations I had with Sam Geiser, Eastern Division's President, several weeks prior to York, he told me that registration numbers were up, topping the 13,000 mark. Sam also remarked that many people told him a strange tale that didn't make economic sense: “They were out of work and had been for some time, but since they didn't have a job, they had the time to come to York – something they previously couldn't do.” Go figure! Doesn't it cost money to attend a train meet/show?



The National Toy Train Museum on Wednesday added a most interesting aspect to their normal program put on by this hobby's Toy Train Manufacturers. Jane Boyce, TCA's Director of Development, arranged a TCA Fashion Show prior to the presentations by MTH and Lionel. In it, several members of the Museum staff and the Education & Museum Committees modeled clothing and accessories sold by the TCA. Jane wrote a script and narrated what each person wore and displayed, much to the amazement of those in attendance, myself included. Most of us were unaware that TCA had such wonderful items. For instance, there are a number of different styles (in different colors) of shirts, with or without pockets, for both men and women with the TCA logo embroidered on the left side. There are jackets ranging from windbreakers to rain wear, golf accessories, umbrellas, towels for golf, bath, and beach, fanny packs and insulated packs for iced or hot beverages; clothing for babies and toddlers; DVD's, note books, and a host of practical items for daily and camping use. Everything has the TCA Logo on it. To access a complete list, log onto [www.traincollectors.org](http://www.traincollectors.org) and click on “Store.” Truly, you will be as amazed as those of us who were at this, the very first TCA Fall Fashion Show, were. I wound up buying a new, light brown, long-sleeved TCA logo dress shirt with a vest pocket.

As for me, well, the rain kept me in the various halls longer than I normally would have stayed. This slowed me down and allowed me to look more thoroughly. My variations are basically based upon colors, so I was able to spot cars already in my post-war collection but in slightly different colors and at prices that were reasonable or very negotiable. Christie was able to secure many donations of door and raffle prizes for the Division to use at our upcoming Turkey Meet. Among these are two very nice Lionel Starter Sets at prices even lower than the “blow-out” prices you see in the CTT ads by Top Ten Lionel Dealers. John and Eva Upshur are kindly saving the Division shipping charges by transporting these sets back to Phoenix with them in their van. Therefore, what we saved in negotiated prices isn't given right back to UPS in shipping charges.

Sam Geiser provided me with a “staff” badge, thus allowing me admission into the halls while set-up was taking place. This proved to be an invaluable tool to me as the TCA Membership Chair, since I could speak privately with several members involved in Membership Complaints. It is so much more “laid back” and civil when problems can be ironed out privately and person to person, rather than via impersonal e-mails or phone calls. I was able to resolve 4 cases and secure heretofore unseen evidence regarding two other cases as a result of this early access on Wednesday afternoon and Thursday morning. Many thanks to Sam and his Committee for making this badge available to me for this purpose. It was an enormously successful strategic tool for the Membership Committee.

Food is an important item on our agenda and even the incessant rain couldn't keep us away from our Lump Crab Cakes (York is due north of Baltimore by less than an hour) at the Roosevelt Tavern, Hillside Café, Alexander's and The Railroad House. One of our staples, Chapps at the Hill, was closed for a major renovation, but we learned it will be up and running again in time for next April's York Meet. Of course, not everyone eats just Crab Cakes, but all of these restaurants are quite a few levels above a Denny's, so the rest of their menus are delectable also. Anyone who ever comes to York is more than welcome to join us for dinner on any evening. The more the merrier! Aside from trains, in the evenings, the Desert Division travels via its stomach!



## YORK TRAVELS WITH PETER AND MARY JANE

by Peter Atonna, TCA #75-7578

Gordon and others have historically shared with you tales from their trips to York. Well, Mary Jane and I had some interesting experiences I would like to share with you from our trip this year.

As our wont, we traveled by Amtrak, enjoying the luxury of their Deluxe Bedroom, for us, the only way to do a cross country trip. We got on board at Williams where the Grand Canyon Railway provides a shuttle from their hotel at the GCR depot, a really nice way to start a trip, offsetting a bit getting up at 2 AM to catch the 4:30 AM train. It was its typical 30 minutes late arriving, and by the time the crew woke up the sleeping coach passengers who were supposed to be up and departing at Williams, we left 45 minutes late. As we boarded our car, I noticed a single level car tagged onto the rear of our train, guessing it was somebody's private car along for the ride.

We often make up time by Albuquerque and did this time also, arriving a couple of minutes ahead of schedule. Being curious, we walked to the rear of the train to check out the car and were informed by some passengers that "this was the car for the president of Amtrak." And it was; Joseph Boardman was not only on board, but outside chatting up and down the platform with passengers. No "suit," he was dressed in shirt and slacks and I would never have guessed his identity. So, naturally I had to get a shot of his car and a pleasant attendant let me take his photo with it. Then he asked, "Would you like a shot of you two aboard?" No need to guess my answer.



Peter and Mary Jane aboard a very special car.

For some strange reason, we were on time - to the minute - the rest of the trip into Chicago.

We left the train at Martinsburg, WV, the closest stop to York, and picked up a rental car. This year we went west an hour into West Virginia to ride the Potomac Eagle, a tourist train on an old B&O line along the south branch of the Potomac River. The train goes through beautiful valley and mountain country that saw much Civil War action. We were fairly early for fall colors, and unfortunately, a pretty cloudy day prevented enjoying what we saw in its full beauty. We should have been thankful, as other than Wednesday morning at the bandit meets, we never saw dry ground again during the trip.



Gastronomes Greg and Mechele Palmer, Christie Wilson, Jane Boyce, Roy and June Aydelotte, Gordon Wilson, and Mary Jane Atonna

Gordon will, I am sure, give you his gastronomical evaluation of the trip, but we did get a shot of us with the Wilsons, Palmers, Aydelottes and Jane Boyce, our TCA Director of Development, enjoying dinner at the Roosevelt Tavern, an annual York stop.

As far as the show itself, I was fortunate to attend three seminars presented by manufacturers, so got a good insight as to where the hobby is going. First was the new Lionel presentation in the Gold Hall. We guessed they might not be busy for their first presentation and they were not, so we got an almost personal show. Demonstrated were the new Vision locos as well as their child's railroad (I know a grandson who will be getting this!) and the DVD shown in the current catalog. The bells and whistles (literally) of the new Pennsy 0-8-8-0 Vision Line steamer were operated, as well as what may have been the hit, a light show provided by the GE Evolution Hybrid diesel.

The next night featured presentations at the HiRailers Unlimited meeting by Lionel, Atlas, and MTH. Both Atlas and MTH agreed that the classic counter cyclical economy for hobbies is alive during this recession. Their sales are not down and are holding steady. Jim Weaver from Atlas said they guessed wrong in scaling back their Premier line, thinking the lesser priced Trainman Line would do better. while in fact it was just the opposite. He also noted that track sales are going through the roof, as folks seem to be staying home and working on layouts. MTH noted their success in penetrating new markets such as HO scale and the European market. In fact their biggest seller this last catalog was the new French steamer, with half the sales going to Europe. They also noted that some of the new electronics developed for the HO line will also show up in the O gauge line such as scale sized automatic couplers. Mike Reagan, head of Lionel's Service Department, gave a good overview of how it is operating, including the availability of replacement parts and service itself.

The next morning we had breakfast at Alexander's restaurant (another York standby) for the meeting of the OGR chat line's TMCC group to discuss the status of the upcoming upgrade for Lionel's Legacy Command system. As one using that on my layout now, we got to hear one of Lionel's Beta testers give a detailed description of the upgrades and changes on their way. We also got another dose of Mike Reagan (he was in great humor for both meetings) and Mary Jane came away the winner of a Lionel Legacy T shirt.

We had planned to head north to a large carriage auction on Saturday morning before heading back to Martinsburg to catch the return train. It is a neat visit to another fairgrounds, this time covered inside and out with all sorts of new and antique carriages, sleighs, and assorted pieces and parts. Being right in the middle of Amish country, their furniture and other craft and food items are there too. However, four straight days of rain and the thought of all those muddy grounds made us decide instead to do Saturday morning at the York fairgrounds. Good choice as we had not picked up anything significant yet. But for some reason, big black articulated steamers started calling to me during the show, so we went looking for an N&W steamer I had caught a glimpse of earlier. Minutes before leaving the Orange Hall and heading home, Mary Jane said, "Isn't that the one you were looking for?" And of course eagle eyes was right. Now, come Christmas morning, I will get to see it again.

And Amtrak stayed right on time all the way home.



### IN MEMORIAM

Sadly we announce the passing of Frank Trunzo, who had been a member of the Desert Division ever since his relocation to Arizona several years ago. Frank, a resident of Green Valley, often attended meets with some of his Marx oddities. Recently, due to ill health, he was unable to make the trek north; however, he maintained his ties with the Desert Division and TCA.

### HOW CAN YOU HELP?

As we enter November, we need to spread the word about the two-day Turkey Meet. May we hang a poster at the place where you work? Put out fliers at your place of business? Are there stores or businesses in your neighborhood that you frequent that would hang a poster or put out fliers for you as a Thank You for your continued business? Will you ask them? Once you have permission to post information about this year's Turkey Meet, contact Gordon Wilson or Chris Allen to get the posters/fliers.

Would a restaurant you frequent donate a free meal for us to use as a door or raffle prize? Ask – they might just say Yes. Once you have the donation, contact Gordon Wilson or Chris Allen to let us know what you were able to procure. Every little bit helps!

### DESERT DIVISION - TCA BOARD OF DIRECTORS – 2008-9

President:	Katie Elgar	623-580-6957	Directors:	Steve Bienstock	480-998-9227
Vice President:	Jonathan Peiffer	602-561-4131		Sam McElwee	480-838-5847
Treasurer:	Bob Herman	480-948-2730		Greg Palmer	505-898-3840
Secretary:	Fred Hunter	480-947-3639		Gordon Wilson	480-837-5344

### BOARD MEETING

The next meeting of the Desert Division Board of Directors will be held on Wednesday, November 11, beginning at 7:30 AM at the home of Bob and Joan Herman. Members are welcome to attend. Please call 480-948-2730 to be sure there are enough chairs.

### JANUARY MEET LOCATION

After a concerted effort on the part of the Desert Division Board of Directors, we have found a location for the January 9<sup>th</sup> Desert Division Meet. It is the Shepherd of the Valley Lutheran Church, 1500 W. Maryland Avenue, Phoenix, AZ 85015. From Route 51, take the Glendale Avenue exit, Exit 5, toward Lincoln Drive. Turn right onto E. Glendale Avenue. About 2.4 miles later, turn left onto N. 7<sup>th</sup> Avenue. In ½ mile, turn right onto Maryland Ave. After ½ mile, Shepherd of the Valley Lutheran Church is on the right. From I-17, take Exit 205 toward Glendale Avenue. Turn left onto W. Glendale Avenue. In 1.3 miles, turn right onto 15<sup>th</sup> Avenue. Very soon you will see Shepherd of the Valley Lutheran Church on the right. The parking lot is on the north side of the church, accessible from either Maryland or 15<sup>th</sup> Avenue.



## APACHE BEER CAR STATUS

by Peter Atonna, TCA 75-7578

I just wanted to give Desert Division members a heads up if you are interested in our last fundraiser car offer, the second Apache Beer car. As I write this in late October, we are at 95 orders for the three rail car and 8 for the two rail version. Since there will be only 250 of the three rail and 24 of the two rail made, if you are interested in one, please get your order in as soon as you can. The ad for it just came out in CTT and my first orders came in today. The TCA Headquarters News ad will be out shortly. I am still getting inquiries trying to locate the first of the Apache Beer cars and would hate to see any of our Desert Division members missing out if you are interested. You can order it from either our website or from the print ads.

## FLAG MINT CARS AVAILABLE

By Peter Atonna, TCA 75-7578

As you know, we ordered a few extra Lionel Flag Mint Cars so we could sell them at the Convention, and that didn't happen. They have arrived and have been shipped, including to those of you who responded to my earlier note to be put on a waiting list for cars. At this point, I have four uncommitted cars and would like to make them available to Desert Division members. They are \$74 each and it will be on a first come, first served basis. So, if you want one, e-mail me ASAP at [mjatonna@commspeed.net](mailto:mjatonna@commspeed.net). We are saving a couple for the Turkey Meet and the Holiday Party, but other than that, when they are gone, they are gone! P.S. I can deliver them to you at the Turkey Meet if you wish.

## 2009 HOLIDAY PARTY

Sunday, December 6, 2009

Phoenix Marriott Mesa

200 N. Centennial Way

Mesa, AZ 85201

11 AM: Meet and Greet (cash bar available)

Santa will be there to see the children under 12

Noon: Brunch

Fellowship, Food, Favors, Raffles, Auctions and Fun!

Chair: Ralph & Sally Treichel

Reservation deadline: November 30, 2009

-----Cut here and send with check-----

Make check payable to Desert Division TCA and send this form and check to

Ralph Treichel

16802 N. 1<sup>st</sup> Avenue

Phoenix, AZ 85023

Adults: \$27.00

Children 12 and under: \$15.00

Children 2 and under: Free

Please print names of persons attending, giving ages of children 12 and under.

\_\_\_\_\_  
\_\_\_\_\_  
\_\_\_\_\_  
\_\_\_\_\_

# Adults @ \$27.00 \_\_\_\_\_

# children 12 and under: \$15.00 \_\_\_\_\_

Total enclosed \_\_\_\_\_

Please indicate if you will need handicapped seating.



# CELEBRATE ARIZONA!

With the second Apache Beer 40' woodside reefer by Atlas sponsored by the Desert Division



Now in 3 rail and 2 rail! - Two car numbers available

Delivery expected - end of 2009

Only 250 to be made in 3 rail - 24 in 2 rail

Qty.	PLEASE SEND ME:	Three Rail	Two Rail
_____ 3 rail \$77.95 - 2 rail \$82.95		\$ _____	\$ _____
_____ Second road number		_____	_____
Shipping @ \$8 per car		_____	_____
(AZ residents sales tax: \$5.50/3 rail; \$5.90/2 rail )		_____	_____
TOTAL ENCLOSED		\$ _____	\$ _____
Name _____			
Address _____			
City/State/ZIP _____			
Make checks to: Desert Division Mail to: Desert Division 25375 N. Feather Mountain Rd. Paulden, AZ 86334 Or order from: <a href="http://www.TCAdd.org">www.TCAdd.org</a>			



# 34th ANNUAL DESERT DIVISION TURKEY MEET MESA CONVENTION CENTER

November 28-29, 2009

TWO DAY SHOW



**TOY TRAIN SWAP MEET** - The Toy Train Swap Meet is our 34th Annual Turkey Meet. The meet features approximately 200 sales tables of toy trains and related model railroading items for sale by local train enthusiasts. The Swap Meet brings people together with special interests in the model railroading hobby to buy and sell toy trains and train related items of all gauges.

## ADMISSION FEE

Pre-registration admission fee for the event is \$5 cash donation per person. Children under 14 years of age are admitted FREE when accompanied by an adult. Admission fee at the door is \$6 cash donation per person.

## REGISTRATION

Everyone must register. Registration fee is not included in table fees. **Pre-Registered members of TCA, GCMR, LOTS, LCCA & TTOS, in good standing**, will be admitted to the trading hall thirty minutes prior to the general public.

## TABLE SALES

Tables will be assigned on a first come - first serve basis. The tables are approximately 30" wide x 8' long. Consult posted floor plan for seller assignments. Limited electrical outlets are available for an additional fee and must be requested at registration. Special table requests with friends must be made in writing with pre-registration. Every effort will be made to accommodate special requests. **TRADING WILL NOT BE PERMITTED DURING UNLOADING OR SETUP**

## RULES

- Seller badges must be worn at all times.
- All sale items must meet TCA policies.
- Restoration and reproduction items must be marked per TCA policy.
- Table holders must remain setup until 3:00 PM on both days of the meet.
- Trading will not be permitted during unloading or setup. Persons not involved in setup will be asked to leave the hall.
- NO SMOKING PERMITTED in trading hall.
- Keep your table covered for security when leaving the hall.
- Sellers are responsible for obtaining the sales tax permit from the City of Mesa unless the exemption for Casual Sales applies [Ref: City of Mesa ordinance, Chapter 5-10 Privilege and Excise Tax].
- "I agree to comply with all of the rules and regulations of the Train Collectors Association (TCA) and its Divisions and Chapters in effect from time to time, especially including all rules and regulations of all TCA Committees and any actions and rulings of all TCA Committees."
- "I also agree that all items sold by me to any TCA Member or at any TCA sponsored meet shall be sold on the basis that I represent that all such items are authentic and in the manufacturer's original condition unless I have caused any such item to be appropriately marked as a restoration or reproduction."

[www.tcadd.org](http://www.tcadd.org)

For Additional Information and Registration  
Contact: Bob Herman 480.948.2730

REGISTRATION - PLEASE PRINT LEGIBLY

NAME \_\_\_\_\_ TCA# \_\_\_\_\_

ADDRESS \_\_\_\_\_ PHONE \_\_\_\_\_

CITY \_\_\_\_\_ STATE \_\_\_\_\_ ZIP \_\_\_\_\_

SPOUSE \_\_\_\_\_ GUESTS \_\_\_\_\_

I hereby agree to be bound by the rules of the Turkey Meet in regards to buying, selling, ethics and behavior. I further agree, that in the case of a dispute, the meet chairman, or an impartial referee appointed by the Meet Chairman shall arbitrate the matter and render a binding decision. I shall upon the direction of the Meet Chairman, in the case of a disputed sale, refund a buyer's money.

Signed X \_\_\_\_\_ Date \_\_\_\_\_

Make check payable to: Desert Division TCA

Mail Registration to: Robert Herman, 11429 N. 68<sup>TH</sup> St. , Scottsdale, AZ 85254-5148

NO MAIL REGISTRATIONS ACCEPTED AFTER NOVEMBER 20, 2009

## FEES:

Registration\* \$5.00

\*(Registration fee not included in Table Fee)  
(Children under 14 FREE)

Spouse or Guests \_\_\_\_ x \$ 5 ea \$ \_\_\_\_

Table Fee \_\_\_\_ x \$35 ea \$ \_\_\_\_

TOTAL Enclosed \$ \_\_\_\_

Reg# \_\_\_\_\_ Date Rcvd \_\_\_\_\_

Chk# \_\_\_\_\_ Chk Amt \_\_\_\_\_



44<sup>TH</sup> BIENNIAL

# WINTER TOY TRAIN SHOW & MEET

SPONSORED BY THE GADSDEN-PACIFIC DIVISION  
TOY TRAIN OPERATING MUSEUM, LTD.

PHONE: 520-888-2222

MUSEUM'S WEBSITE: <http://www.gpdToyTrainMuseum.com>

ALL GAUGES

\*

RAILROADIANA

\*

SNACK BAR

\*

OPERATING LAYOUTS



BUY

\*

SELL

\*

TRADE

\*

SATURDAY JANUARY 16, 2010 9:00AM TO 3:00PM

(Seller Table Setup: 6:00 AM – 9:00 AM)

ADMISSION \$5.00

FREE FOR CHILDREN UNDER THE AGE OF 13 ACCOMPANIED BY AN ADULT

**GRANT INN EVENT CENTER**  
**W. GRANT RD. & I-10 \* TUCSON, AZ**

## SPECIAL SELLERS ONLY RAFFLE

SELLERS STILL SETUP AT 3 PM WILL PARTICIPATE IN A FREE DRAWING FOR THE FOLLOWING PRIZES

1<sup>ST</sup> PRIZE: \$50 CASH 2<sup>ND</sup> PRIZE: \$25 CASH 3<sup>RD</sup> PRIZE: LIONEL GPD-TTOM ORE CAR

**8 FOOT TABLES (ONLY 150 TABLES AVAILABLE)**  
**PRE-PAID TABLE RESERVATIONS ARE REQUIRED**

TABLE: \$25.00

FOR TABLE RESERVATIONS CALL BUD STEWART AT (520) 749-0228  
OR E-MAIL BUD AT [bud@at.tuccoxmail.com](mailto:bud@at.tuccoxmail.com)

SEND TABLE RESERVATIONS CHECKS PAYABLE TO GPD-TTOM TO  
GADSDEN-PACIFIC DIVISION TOY TRAIN OPERATING MUSEUM, LTD.  
P.O. BOX 85425; TUCSON, AZ 85754-5425  
ATTN: TOY TRAIN SHOW COMMITTEE

**TRAIN COLLECTORS ASSOCIATION  
DESERT DIVISION**

Gordon Wilson, Editor  
Desert Division Dispatch  
16231 E. Ocotillo Drive  
Fountain Hills, AZ 85268

**POSTMASTER:** This Federal 501c3 Newsletter  
contains **DATED MATERIAL** requiring action  
by members. **PLEASE DELIVER** on or before  
**November 5, 2009**

NON PROFIT  
ORGANIZATION  
U.S. POSTAGE  
**PAID**  
SCOTTSDALE AZ  
PERMIT NO. 253

RETURN SERVICE REQUESTED



## **JANUARY MEET LOCATION**

**Shepherd of the Valley Lutheran Church, 1500 W. Maryland, Phoenix, AZ**

**Every Childhood Should Have A Train  
Enroll your children in Kid's Club Today!**

**VISIT OUR WEBSITE: [www.tcadd.org](http://www.tcadd.org)  
Click on the link to our e-Bay offerings.**

### **COMING EVENTS**

- |                 |   |
|-----------------|---|
| November 7      | "In the Heat" Meet –North Phoenix Baptist Church, 5757 N. Central Ave., Phoenix, AZ – 9 AM  |
| November 28-29  | Turkey Meet – Mesa Conference Center, Mesa, AZ – 9 AM<br>Contact Bob Herman 480-948-2730  |
| December 6      | Holiday Party – Mesa Marriott, 200 N. Centennial Way, Mesa, AZ – NOON   |
| January 9, 2010 | Regular Division Meet – Shepherd of the Valley Lutheran Church, Phoenix, AZ – 9 AM  |
| January 16      | Rio Grande Chapter Meet – Sombra Del Monte Church, 2528 Utah NE, Albuquerque, NM – 10 AM<br>Contact Greg Palmer 505-898-3840            |
| January 16      | 44 <sup>th</sup> Biannual Winter Toy Train Show & Meet – Grant Inn Event Center, Tucson, AZ – 9 AM<br>Contact: Bud Stewart 520-749-0228 |

## **JANUARY MEET LOCATION**

After a concerted effort on the part of the Desert Division Board of Directors, we have found a location for the January Meet. It is the Shepherd of the Valley Lutheran Church, 1500 W. Maryland Avenue, Phoenix, AZ 85015. From Route 51, take the Glendale Avenue exit, Exit 5, toward Lincoln Drive. Turn right onto E. Glendale Avenue. About 2.4 miles later, turn left onto N. 7<sup>th</sup> Avenue. In ½ mile, turn right onto Maryland Ave. After ½ mile, Shepherd of the Valley Lutheran Church is on the right. From I-17, take Exit 205 toward Glendale Avenue. Turn left onto W. Glendale Avenue. In 1.3 miles, turn right onto 15<sup>th</sup> Avenue. Very soon you will see Shepherd of the Valley Lutheran Church on the right. The parking lot is on the north side of the church, accessible from either Maryland or 15<sup>th</sup> Avenue.